

Transforming Cities Fund

Selby Station Gateway

Delivered in
partnership by:



Funded by:



Zone 4: Shipyard Road, Selby Lock and the Denison Road Bridge

Shipyard Road connects Ousegate to the north with the Denison Road bridge and Canal Road to the south. Denison Road bridge is very narrow canal bridge and not suitable for vehicles, pedestrians and cyclists. The existing infrastructure along Canal Road is not as good as it could be particularly in relation to walking and cycling. There are poor pedestrian and cycle links between Shipyard Road and the Trans Pennine Trail Canal Route over Selby Lock.

We want to

- Encourage walking and cycling by
 - Closing the canal bridge to all vehicles except pedestrians and cyclists.
 - Including an option to create new two-way cycle track between Shipyard Road, Selby Lock and the Trans Pennine Trail
 - Planting trees
- Improve road safety by introducing a 20mph speed limit on Shipyard Road and other traffic calming measures.
- Resurface the road/pavement

Although we would like to provide cycle tracks or lanes along Shipyard Road there is not enough space. Low traffic speeds and relatively low traffic flows will help keep cyclists safe.

If the Denison Road bridge is closed drivers will need to take an alternative route via Bawtry Road.

Creating the two-way cycle track between Shipyard Road, Selby Lock and the Trans Pennine Trail will require the removal of some trees along Shipyard Road.

Zone 4 Plan A: Shows the existing layout and some of the challenges and issues we are aware of.

Zone 4 Plan B: Shows the proposed layout with suggested changes. Where possible we have tried to communicate what impacts the proposals may have.

If interested in this zone make sure to check out our plans for Ousegate (Zone 3)

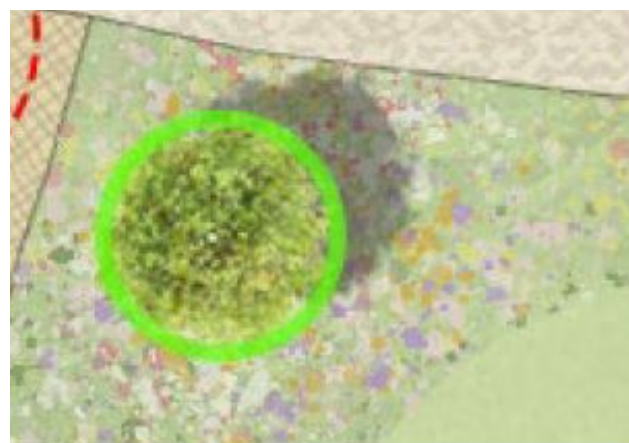
Zone 4: Key



Existing trees that will remain



Blue badge parking bays



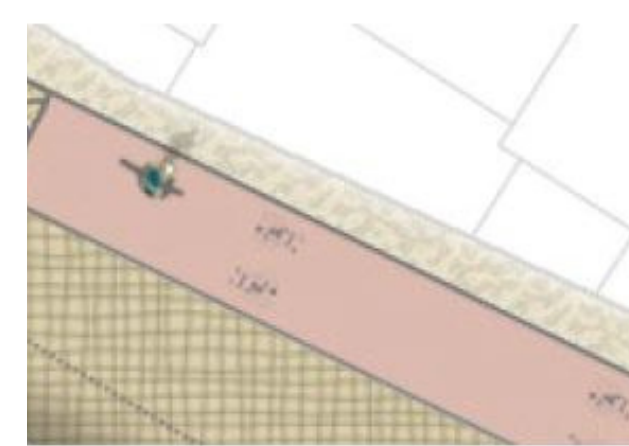
New trees we want to plant



Development opportunity

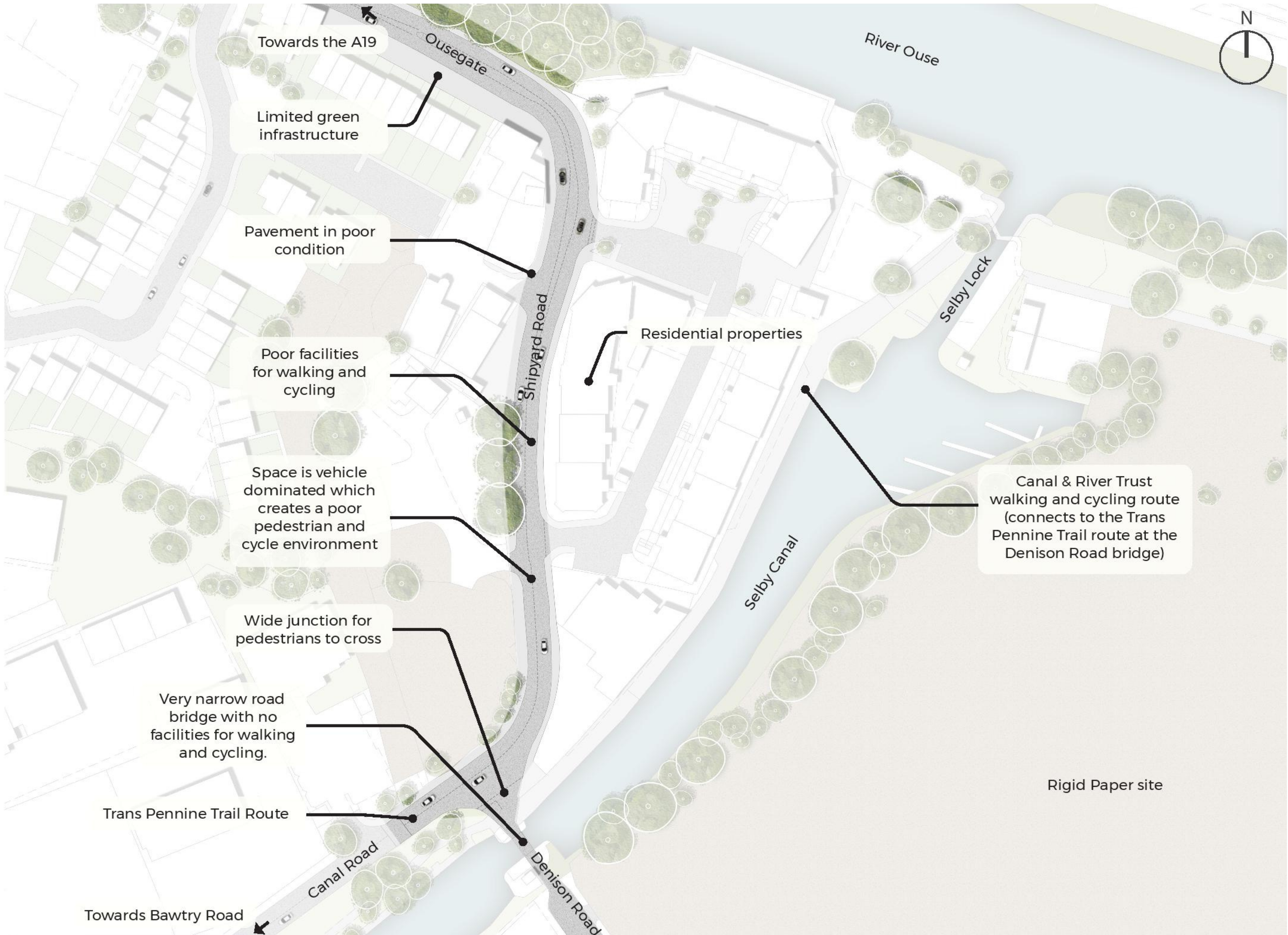


Trees which may need to be removed

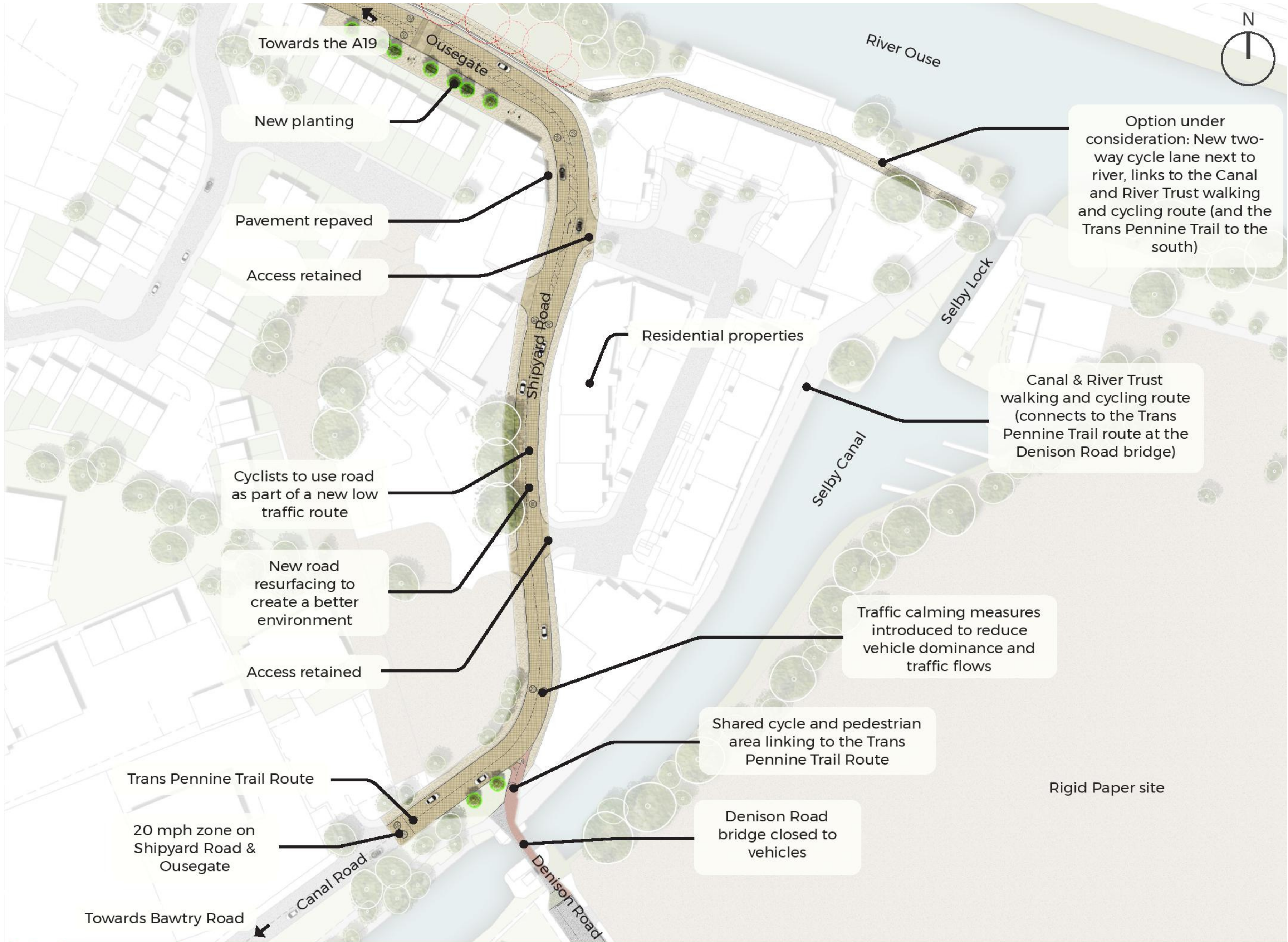


Cycle lanes

Zone 4: Plan A: Shipyard Road, Selby Lock and the Denison Road Bridge (existing)



Zone 4: Plan B: Shipyard Road, Selby Lock and the Denison Road Bridge (proposed)



Zone 4: Frequently Asked Questions

Why close the Denison Road bridge canal bridge and what impact will this have?

Drivers will need to take an alternative route via the Bawtry Road bridge. This will extend some drivers journey times by a very small amount but it will help encourage people to walk and cycle in this part of Selby (including to and from Selby Station).

What will the impact on trees be?

In order to deliver a two-way cycle lane between Shipyard Road and Selby Lock 5-10 trees will need to be removed. Although there is opportunity to plant many more trees within the self sown scrub area. New trees will take years to grow to full size. The new cycle lane will encourage people to cycle more often.